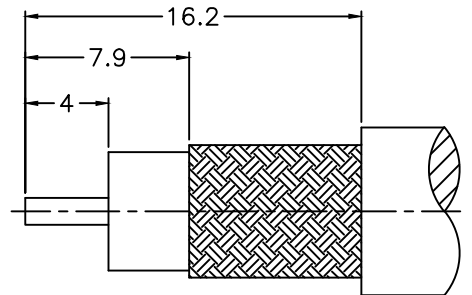
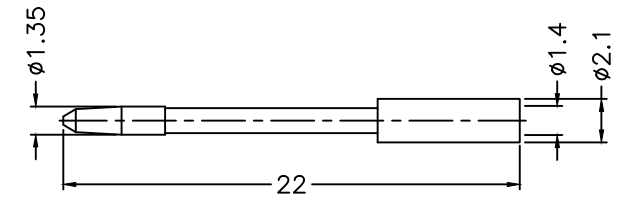
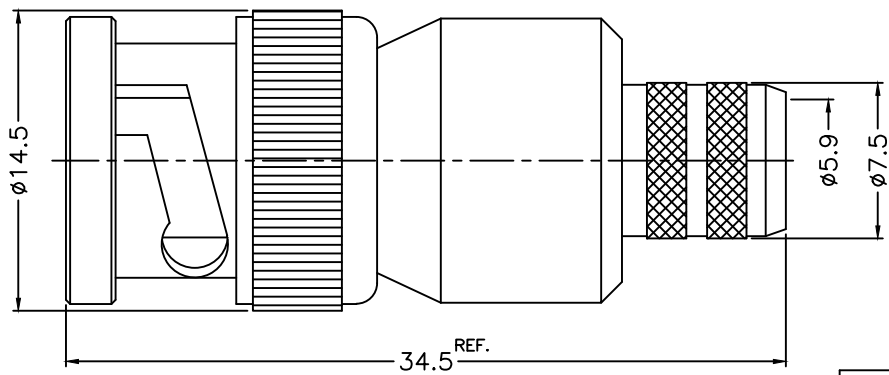


1 2 3 4 5 6 7 8

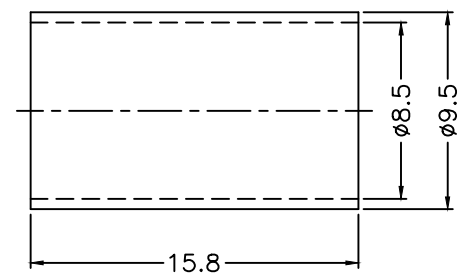
REVISIONS		
ISS	ZONE	DESCRIPTION\PER REQUEST\DATE

- 1. CRIMPED FERRULE  
HEX. CRIMP SIZE .324"
- 2. CRIMPED CONTACT PIN  
HEX. CRIMP SIZE .068"



RECOMMENDED  
CABLE STRIPPING DIM'S  
(建議剝線尺寸)

NOTES: FINISH (PLATING THICKNESS IN MICRO-INCHES)  
 1. BRASS  
 2. NICKEL PL. 100 MIN. THICK OVER COPPER PL. 50 MIN. THICK  
 3. BERYLLIUM COPPER  
 4. GOLD PL. 3 MIN. THICK OVER NICKEL PL. 50 MIN. THICK OVER COPPER PL. 50 MIN. THICK  
 5. TEFLON



10	FERRULE	NOTE 1	NOTE 2	1	FR-85-95-158
9	CONTACT PIN	NOTE 1	NOTE 4	1	900-1121A6-9 -A5-1.4
8	BODY	NOTE 1	NOTE 2	1	900-1121A20-8
7	WASHER	NOTE 1	NOTE 2	1	WS-90-128-08
6	SPRING	SK5	NOTE 2	1	900-1000-6
5	GASKET	SILICONE	RED	1	GS-80-115-15 -S
4	BARREL	NOTE 1	NOTE 2	1	900-1121A20-4 -A1
3	INSULATOR	NOTE 5	NATURAL	1	900-1121A20-3 -75T
2	OUTER CONTACT	NOTE 3	NOTE 2	1	900-1121A11-4
1	SHELL	NOTE 1	NOTE 2	1	900-1121A11-1
NO.	DESCRIPTION	MATERIAL	FINISH	Q'TY	DRAWING NO.

DIMENSIONS ARE IN MILLIMETERS		PART NO.	
UNLESS OTHERWISE SPECIFIED TOLERANCES		APPROVED	DATE
0.5-6 = ±0.2			12-21-'16
6-30 = ±0.4		CHECKED	DATE
30-120 = ±0.6			12-21-'16
120-315 = ±1		DRAWN	DATE
315-1000 = ±1.6			12-21-'16
1000-2000 = ±2.4			
SCALE	3/1	ISSUE	A

RoHS COMPLIANT

**G.L.I.**

TITLE  
BNC CRIMP PLUG  
(FOR BELDEN 4794R, 1794A CABLE)

DRAWING NO.  
900-1121A20-A1-75

FILE NO. R:\D\G\DWG\900\1121A20\A1\75

1 2 3 4 5 6 7 8

F  
E  
D  
C  
B  
A

F  
E  
D  
C  
B  
A