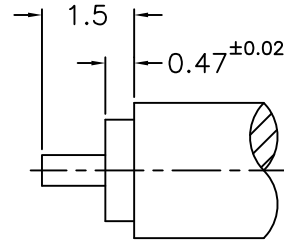
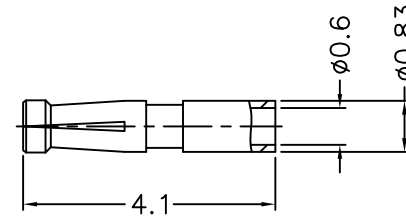
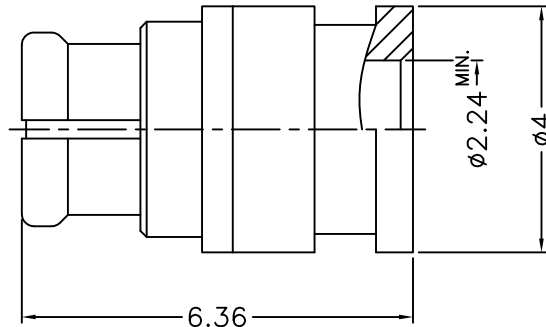


1 2 3 4 5 6 7 8

REVISIONS		
ISS	ZONE	DESCRIPTION\PER REQUEST\DATE
A1	B-1	PL. WAS CHANGED\N/A\10-16-'19



RECOMMENDED
CABLE STRIPPING DIM'S
(建議剝線尺寸)



NOTES: FINISH (PLATING THICKNESS IN MICRO-INCHES)

1. BRASS
2. GOLD PL. 3 MIN. THICK OVER NICKEL PL. 50 MIN. THICK OVER COPPER PL. 50 MIN. THICK
3. BERYLLIUM COPPER
4. PTFE

RoHS COMPLIANT

						DIMENSIONS ARE IN MILLIMETERS				PART NO.		G.L.I.		
						UNLESS OTHERWISE SPECIFIED TOLERANCES				APPROVED	DATE			TITLE
4	CONTACT PIN	NOTE 3	NOTE 2			0.5-6 = ±0.2	6-30 = ±0.4	30-120 = ±0.6	120-315 = ±1	315-1000 = ±1.6	1000-2000 = ±2.4		10-16-'19	SMP DIRECT SOLDER PLUG(F) (FOR .085, .086 SEMI-RIGID CABLE)
3	RETAINER RING	NOTE 1	NOTE 2									CHECKED	10-16-'19	DRAWING NO.
2	INSULATOR	NOTE 4	NATURAL									DRAWN	10-16-'19	SMP-6181A2-28-50
1	BODY	NOTE 3	NOTE 2										10-16-'19	FILE NO. R:\D\G\DWG\SMP\6181A2\28\50-A1
NO.	DESCRIPTION	MATERIAL	FINISH	Q'TY	DRAWING NO.	SCALE	8/1	ISSUE	A1					

1 2 3 4 5 6 7 8

F

E

D

C

B

A

F

E

D

C

B

A